

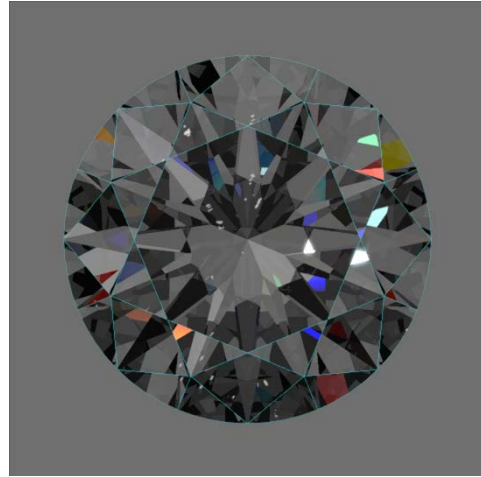
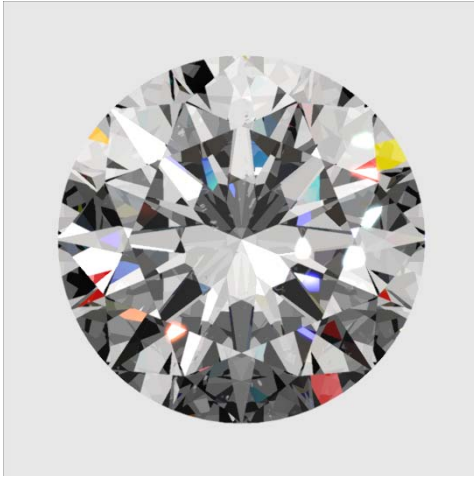
Report: marking_12.26ct – 12.26 Ct Rough

Report date: 22 March, 2010

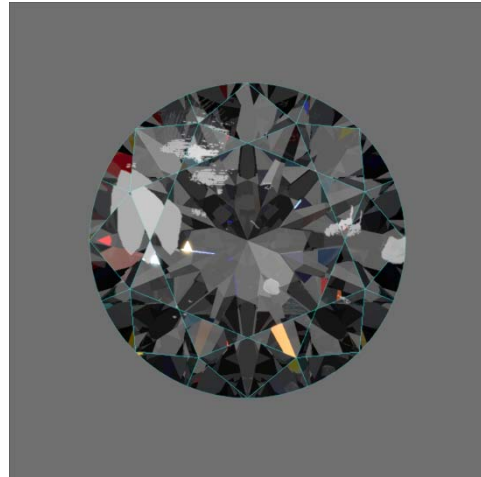
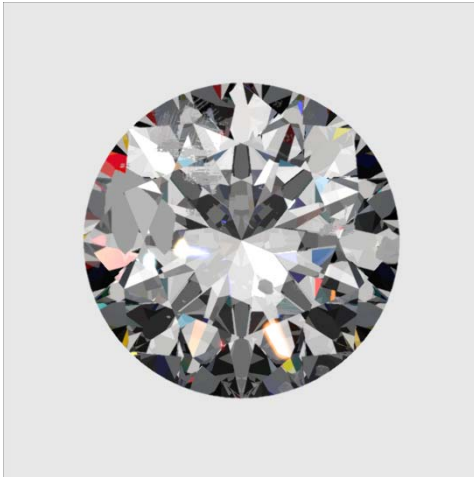
Report scale: 1:5

Solution BB 1 : US\$ 28041.00

Brilliant 3.04 Ct I SI2 G US\$ 20748.00

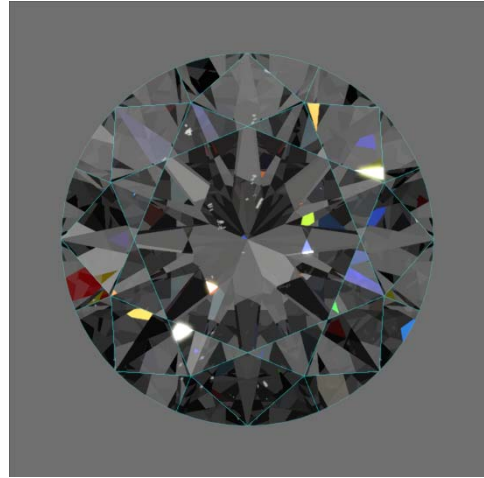
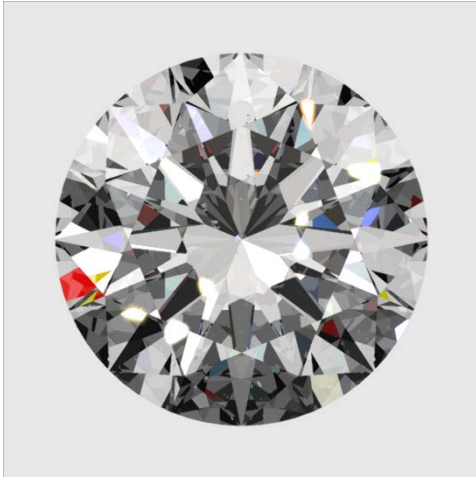


Brilliant 2.04 Ct I SI3 G US\$ 7293.00

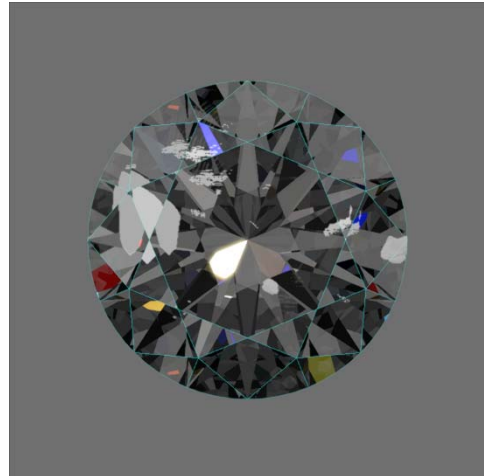


Solution BB 2 : US\$ 27954.00

Brilliant 3.07 Ct I SI2 V US\$ 22104.00

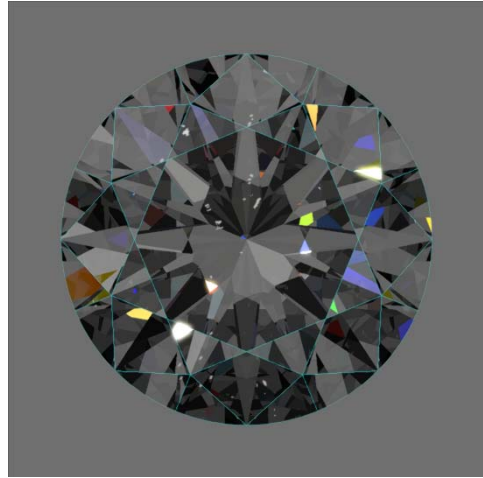


Brilliant 1.95 Ct I I1 V US\$ 5850.00

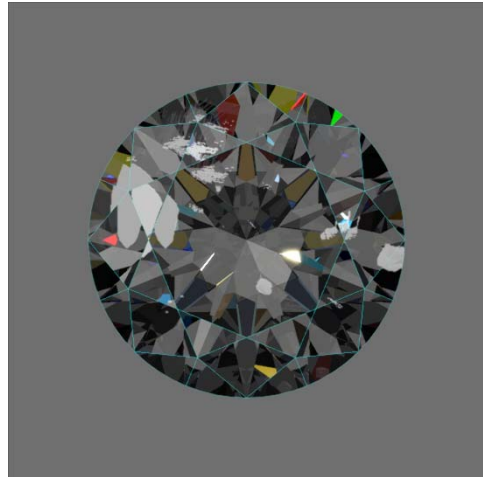
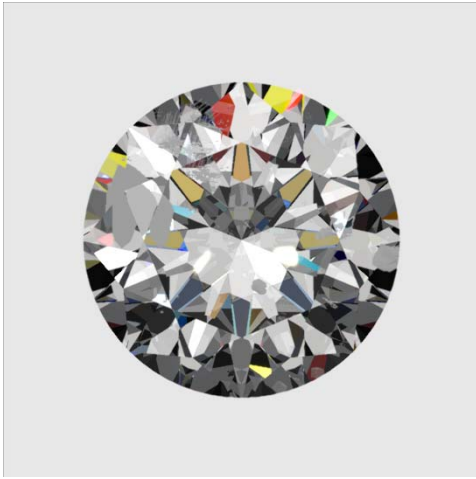


Solution BB 3 : US\$ 27933.75

Brilliant 3.04 Ct I SI2 V US\$ 20748.00

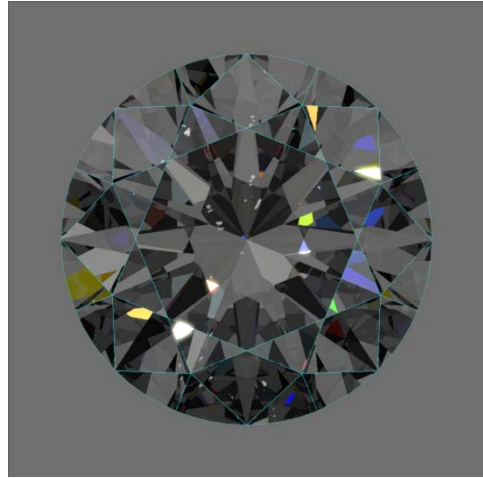


Brilliant 2.01 Ct I SI3 G US\$ 7185.75

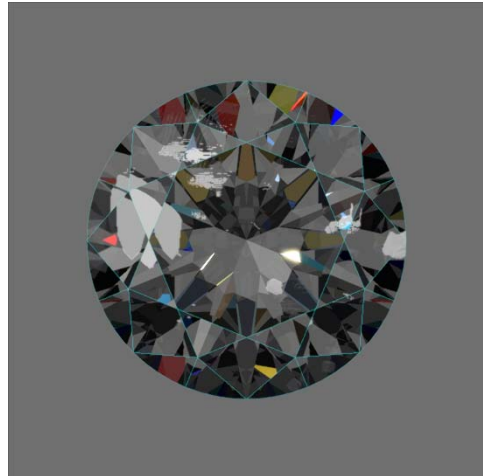
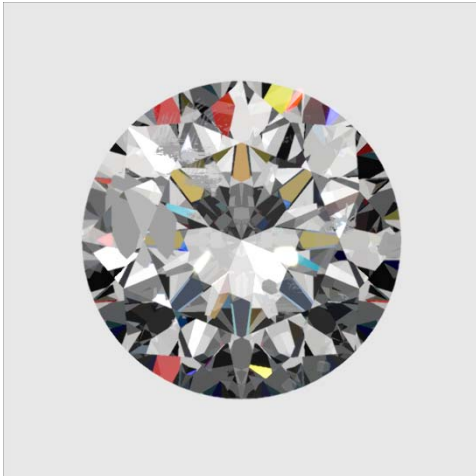


Solution BB 4 : US\$ 27855.80

Brilliant 3.03 Ct I SI2 V US\$ 21816.00

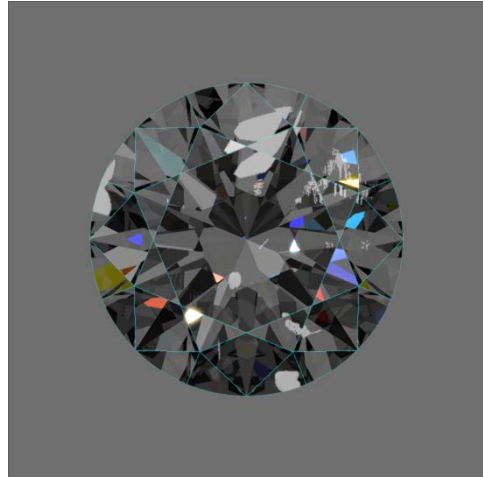
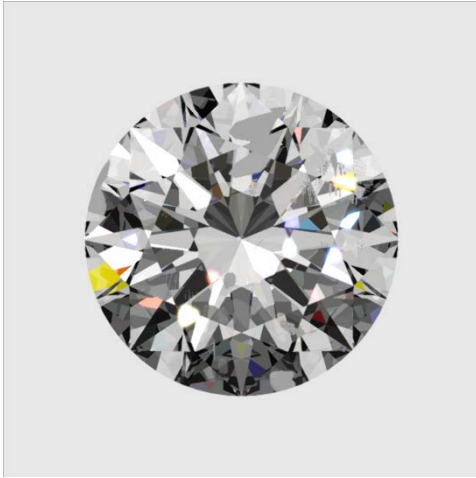


Brilliant 2.02 Ct I I1 G US\$ 6039.80



Solution BB 5 : US\$ 27264.00

Brilliant 1.84 Ct I I1 V US\$ 5520.00



Brilliant 3.02 Ct I SI2 V US\$ 21744.00

