

# Creating and customizing Pricelists from Rapaport CSV files

6 November 2008

Operations with optimization algorithms can require Rapaport pricelists according to manufacture needs.

This document describes creating and customizing pricelist on the base of CSV files from Rapaport web-site <http://www.diamonds.net/> with using *CCFPriceList.dll*.

*Note. The new possibility, working with Rapaport CSV pricelists, is available for Helium Rough and Pacor Client since version 4.33. It is not available yet for Oxygen Software, Helium Speed and Helium Polish. The new possibility will work sins next versions.*

## Content

CREATING AND CUSTOMIZING PRICELISTS FROM RAPAPORT CSV FILES .....	1
CONTENT .....	1
USING RAPAPORT CSV FILES AS SINGLE PRICELIST .....	1
STEP 1. LOAD CCFPRICELIST.DLL TO THE PROGRAM .....	2
STEP 2. CREATING CCFPRICELIST.INI FOR WORKING WITH SEVERAL PRICE LISTS .....	2
STEP 3. CREATING CCFPRICELIST.TXT OR MORE PRICELISTS TXT FILES .....	2
<i>General structure of file CCFPriceList.txt</i> .....	2
<i>Section [Pricelist]</i> .....	3
<i>Section [Cut]</i> .....	4
<i>Example of pricelist txt file</i> .....	4
STEP 4. LOAD CSV FILES IN THE SAME FOLDER WHERE PRICELIST TXT FILES ARE LOCATED .....	6
STEP 5. RUN SOFTWARE AND USE PRICELISTS .....	6
EXAMPLE OF PRICELISTS AND CSV FILES .....	6

## Using Rapaport CSV files as single pricelist

To make pricelist accessible in the program and convert CSV-files to internal software format follow the instruction:

- Step 1. Load CCFPriceList.dll to the program
- Step 2. Creating CCFPriceList.ini for working with several pricelists
- Step 3. Creating CCFPriceList.txt or more pricelists txt files
- Step 4. Load CSV files in the same folder where pricelist txt files are located
- Step 5. Run software and use pricelists

### Step 1. Load *CCFPriceList.dll* to the program

1. Download *CCFPriceList.dll*

[http://www.octonus.com/oct/download/files/CCFPriceList\\_Dll.zip](http://www.octonus.com/oct/download/files/CCFPriceList_Dll.zip)

2. Put downloaded *CCFPriceList.dll* into the folder **Appraiser and Price Lists** or put it into any other folder. For example, folder **Price lists** (for Helium Rough, Pacor Client and Helium Polish) or **System** (for Oxygen Microscope Server, Oxygen Inclusion and Helium Speed).
3. Add the following string in the file *HeliumBat.ini* (Helium Rough and Helium Polish), *PacorBat.ini* (Pacor Client) or *Winoxygen.bat* (Oxygen Microscope Server, Oxygen Inclusion and Helium Speed):

```
LoadExternalAppraiser "<name of folder>\ CCFPriceList.dll"
```

*Note.* Does no need to add described string if *CCFPriceList.dll* is placed in the folder **Appraiser and Price Lists**. Software will load DLL automatically by default.

### Step 2. Creating *CCFPriceList.ini* for working with several price lists

To work with several different pricelists create file *CCFPriceList.ini* with following structure:

```
[Pricelist]
  Filename1= <name of pricelist1>.txt
  Filename2= <name of pricelist2>.txt
  Filename3= <name of pricelist3>.txt
[end]
```

To work with only one pricelist do not needs to create file *CCFPriceList.ini*.

### Step 3. Creating *CCFPriceList.txt* or more pricelists txt files

Create one pricelist file *CCFPriceList.txt*, or create more txt files if you have several pricelists. Its names should be the same as defined in file *CCFPriceList.ini* (see Step 2). Add pricelist txt files into the same folder as *CCFPriceList.dll*

### General structure of file *CCFPriceList.txt*

Pricelist txt files must contain one section [**Pricelist**] and one or more sections [**Cut**] with following structure:



```
[Pricelist]
  Version = 7
  SerialNumber = ...
  Title = ...
    Color = ... [default: D E F G H I J K L M N]
    Clarity = ... [default: IF VVS1 VVS2 VS1 VS2 SI1 SI2 SI3 I1 I2 I3]
    Default = [/color F] [/clarity VS1] [/cut Other]
[end]

[cut]
  Name = [Auto]
  Source = /RapaportCSV2 <filename>.csv
  Synonym = [BR Brilliant] [PS Pear] [PR Princess] [MQ Marquise]
[end]
```

## Section [Pricelist]

```
[Pricelist]
  Version = 7
  SerialNumber = ...
  Title = ...
    Color = ... [default: D E F G H I J K L M N]
    Clarity = ... [default: IF VVS1 VVS2 VS1 VS2 SI1 SI2 SI3 I1 I2 I3]
    Default = [/color F] [/clarity VS1] [/cut Other]
[end]
```

**Version = 7** - Use value **7** for described type of pricelist which use CSV converter.

**SerialNumber = ...** Type serial number of pricelist if you use different pricelists with different quantity of color or clarity grades. Use the same serial number for pricelists if they have the same quantity of color and clarity grades. Default value in program is **6** (*SerialNumber= 6*). If you don't type string *SerialNumber= ...* software automatically uses serial number **6**.

**Title = ...** Type name of pricelist which you see in the software.

**Color = ... [default: D E F G H I J K L M N]** - Type quantity and names of grades of color if you don't use default colors **D E F G H I J K L M N**.

To use default colors don't type string [*default: D E F G H I J K L M N*] in txt file.

**Clarity = ... [default: IF VVS1 VVS2 VS1 VS2 SI1 SI2 SI3 I1 I2 I3]** - Type quantity and names of clarity grades if you don't use default clarity grades IF VVS1 VVS2 VS1 VS2 SI1 SI2 SI3 I1 I2 I3. For example, some companies use grades **VS1-**, **VS1+** instead

of **VS1**. In this case string will be looked like *Clarity= IF VVS1 VVS2 VS1- VS1+ VS2 SI1 SI2 SI3 I1 I2 I3*.

To use default clarities don't type string [*default: IF VVS1 VVS2 VS1 VS2 SI1 SI2 SI3 I1 I2 I3*] in txt file.

**Default = [/color F] [/clarity VS1] [/cut Other]** - Type color grade, color grade for default cut (manually created in software cut will have these grades) and name of cut whose pricelist will be used for cuts which haven't specified pricelist. For example, the price for cut **Heart** will be taken from pricelist of cut **Pear** if you have pricelist for cut **Pear** and don't have pricelist for **Heart** and string *Default= /cut Pear*.

If you don't type **default** string default color will be **F**, default clarity will be **VS1**, default cut will be **Other**. Section [**Cut**] with name of cut **Other** can have any CSV source file. For cut without associated pricelist will be used CSV-file defined in this section [**cut**] with name **Other**.

## Section [Cut]

```
[cut]
  Name = [Auto]
  Source = /RapaportCSV2 <filename>.csv
  Synonym = [BR Brilliant] [PS Pear] [PR Princess] [MQ Marquise]
[end]
```

**Name= [Auto]** - Type name of cut if one file CSV has several cuttings inside. For example:

```
BR IF,D,0.18,0.22,4350.0, 8/8/2008
PS,IF,D,0.18,0.22,1350.0, 8/8/2008
```

**Source = /RapaportCSV2 <filename>.csv** – Type name of CSV file is used for cut.

**Synonym = [BR Brilliant] [PS Pear] [PR Princess] [MQ Marquise]** - Use this string to determine any non-default pricelist CSV with non-standard identification of cut. There are four standard identifications of cut in CSV file: **BR**, **PS**, **PR** and **MQ**. These identifications correspond to internal software names **Brilliant**, **Pear**, **Princess** and **Marquise**. For these cuts it is not necessary to use **Synonym** string. But if you use identification **OV** in CSV file type string **Synonym= OV Oval**. By this operation software will take CSV file with identification **OV** for internal **Oval** cut. Identification of cut is present on first place of every string in file CSV: *BR IF,D,0.18,0.22,4350.0, 8/8/2008*.

## Example of pricelist txt file

```
[PriceList]
  Version= 7
  Title= "Rapaport pricelist"
  Clarity= IF VVS1 VVS2 VS1- VS1+ VS2- VS2+ SI1- SI1+ SI2- SI2+ SI3-
SI3+ I1 I2 I3
```



```

Default= /color D /cut Other

[cut]
  Source= /RapaportCSV2 CSV2_ROUND_8_4.csv
[end]

[cut]
  Source= /RapaportCSV2 CSV2_PEAR_8_4.csv
[end]

[cut]
  Source= /RapaportCSV2 CSV2_PRINCESS_8_4.csv
[end]

[cut]
  Name= Oval
  Source= /RapaportCSV2 CSV2_Oval.csv
  Synonym= OV Oval
[end]

[cut]
  Name= Heart
  Source= /RapaportCSV2 CSV2_MARQUISE_8_4.csv
[end]

[cut]
  Name= Other
  Source= /RapaportCSV2 CSV2_PEAR_8_4.csv
[end]

```

This is an example of pricelist with follow parameters:

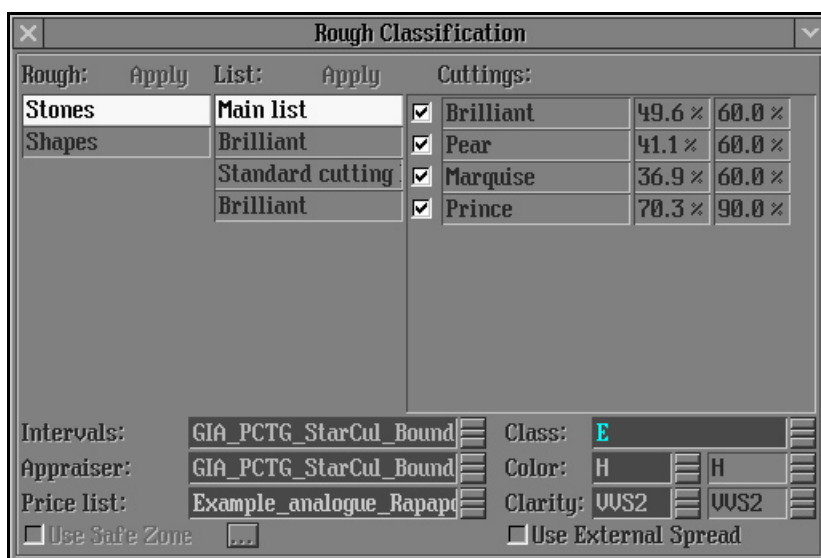
- name **Rapaport pricelist**;
- serial number **6**;
- color grades by default **D E F G H I J K L M N**;
- clarity grades **IF VVS1 VVS2 VS1- VS1+ VS2- VS2+ SI1- SI1+ SI2- SI2+ SI3- SI3+ I1 I2 I3**;
- default cut has color **D** and clarity **VS1**;
- for cuts without specified pricelists, for example radiant, file **CSV2\_PEAR\_8\_4.csv** will be used for calculation of price.

#### **Step 4. Load CSV files in the same folder where pricelist txt files are located**

Put CSV files in the same folder where pricelist txt files are located. Names of CSV files should be defined in txt-files in section cut

#### **Step 5. Run software and use pricelists**

Run software and select the pricelist, for example **Example\_analogue\_Rapaport (08.08.2005)**, in the corresponding field.



*Note.* The visible pricelist name in software is defined in file **CCFPriceList.txt** and other pricelist txt files.

### **Example of pricelists and csv files**

This document is accompanied with simple example of pricelists for Brilliant and Pear cuts loaded using CSV files. Please download the example here <http://www.octonus.com/oct/download/files/CsvExample.zip> and put into the folder **Appraisers and Price Lists**. This example has CSV files are analogue of CSV files from Rapaport web-site. But please note that all prices are not from Rapaport web-site, the pricelist is not real.